

Phone
Fax

Stratos 40/1-12 CAN PN 6/10
System : High-efficiency pump

WILO

Customer

Project

Customer no.

Project no.

Contact

Position no.

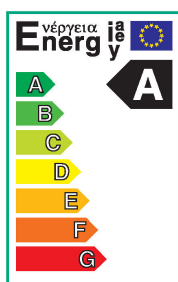
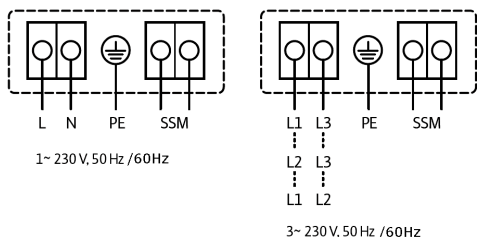
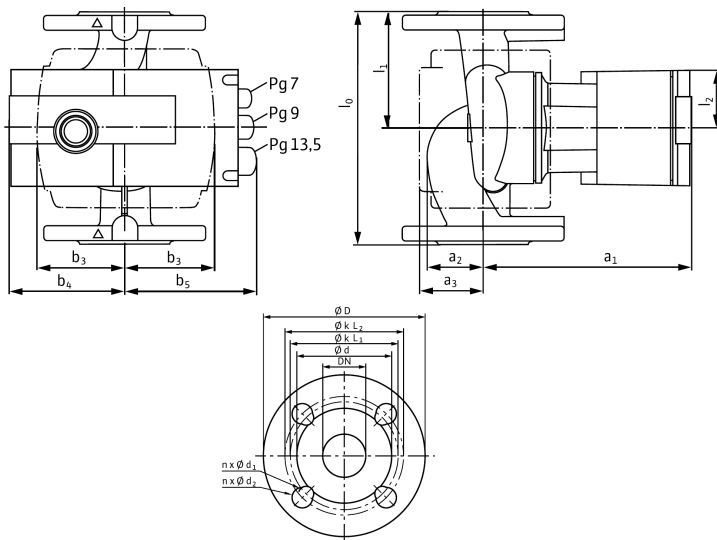
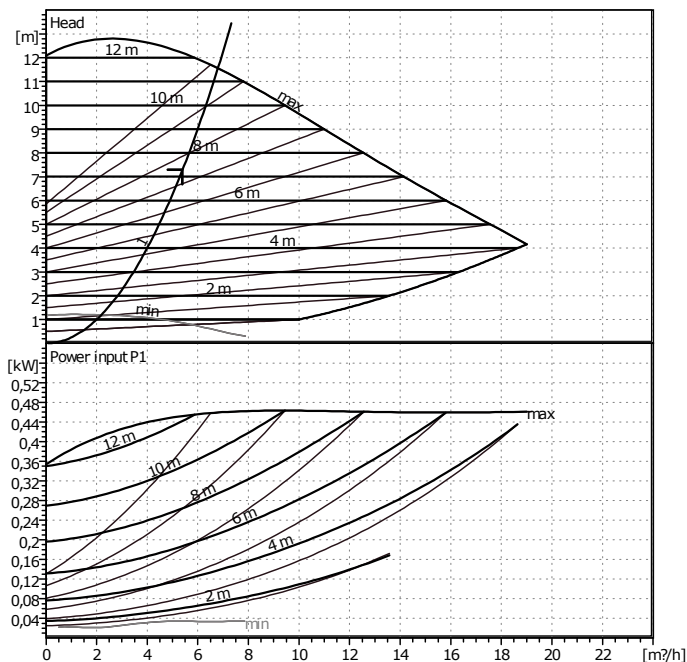
Care of

Location

Date

2011-02-14

Page 1 / 1



Requested data

Flow	5,4 m³/h
Head	7,3 m
Fluid	Water, pure
Fluid temperature	50 °C
Density	0,9881 kg/dm³
Kinematic viscosity	0,5478 mm²/s
Vapor pressure	0,1247 bar

Pump data

Make	WILO
Type	Stratos 40/1-12 CAN PN 6/10
Pumpe type	Single head pump
Operating type	dp-c
Pressure rating	PN10
Min. fluid temperature	-10 °C
Max. fluid temperature	110 °C

Hydraulic data (duty point)

Flow	5,4 m³/h
Head	7,3 m
Power input P1	0,236 kW

Minimum suction head

Temperature	50	95	110			°C
Minimum suction head	5	12	18			m

Materials / Shaft seal

Pump housing	EN-GJL 250
Impeller	Fiber-reinforced PPS
Shaft	X 46 Cr 13
Bearing	Metal impregnated carbon

Dimensions per pump

mm							
a1	252	b5	136	d	84	k2	110
a2	62	l0	250	D	150		
a3	84	l1	125	dL1	14		
b3	96	l2	66	dL2	19		
b4	120	n	4	k1	100		

Suction side	DN 40	/ PN10
Discharge side	DN 40	/ PN10
Weight	14 kg	

Motordata per Motor/Pump/

Energy efficiency class	A
Rated power P2	350 W
Power input P1	470 W
Nominal speed	4600 1/min
Rated voltage	1~ 230 V, 50 Hz
Max. current	2,05 A
Degree of protection	IP 44
Permitted voltage tolerance +/- 10%	

Item no. of standard version	2090455
------------------------------	---------